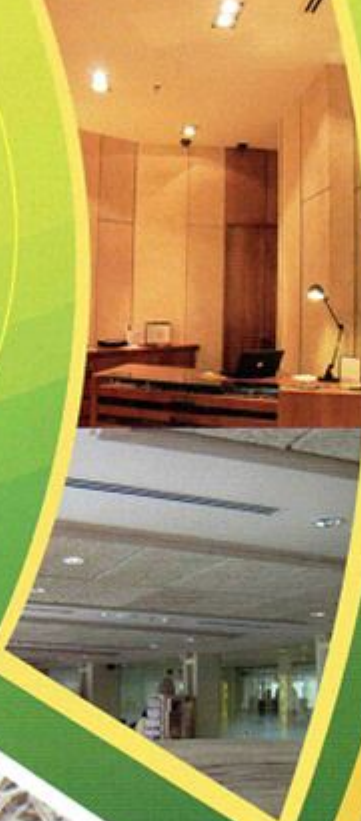


PHIDIAS WOOD WOOL

YOUR
**SMART
ACOUSTIC
SOLUTION**

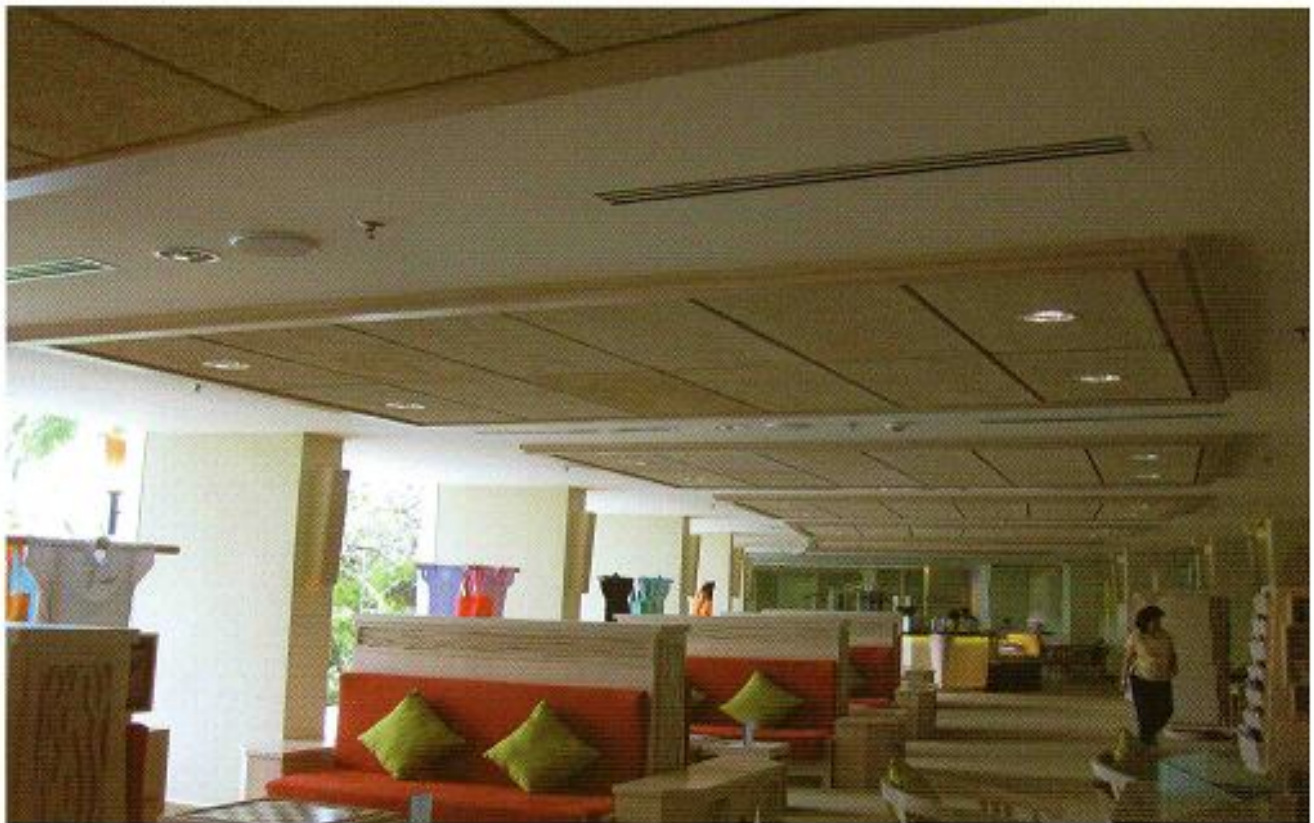


- ★ Durable
- ★ Excellent Performance
- ★ Environment Friendly
- ★ Unlimited Design Possibilities
- ★ Elegant & Beautiful



IDEAL CHOICE FOR :

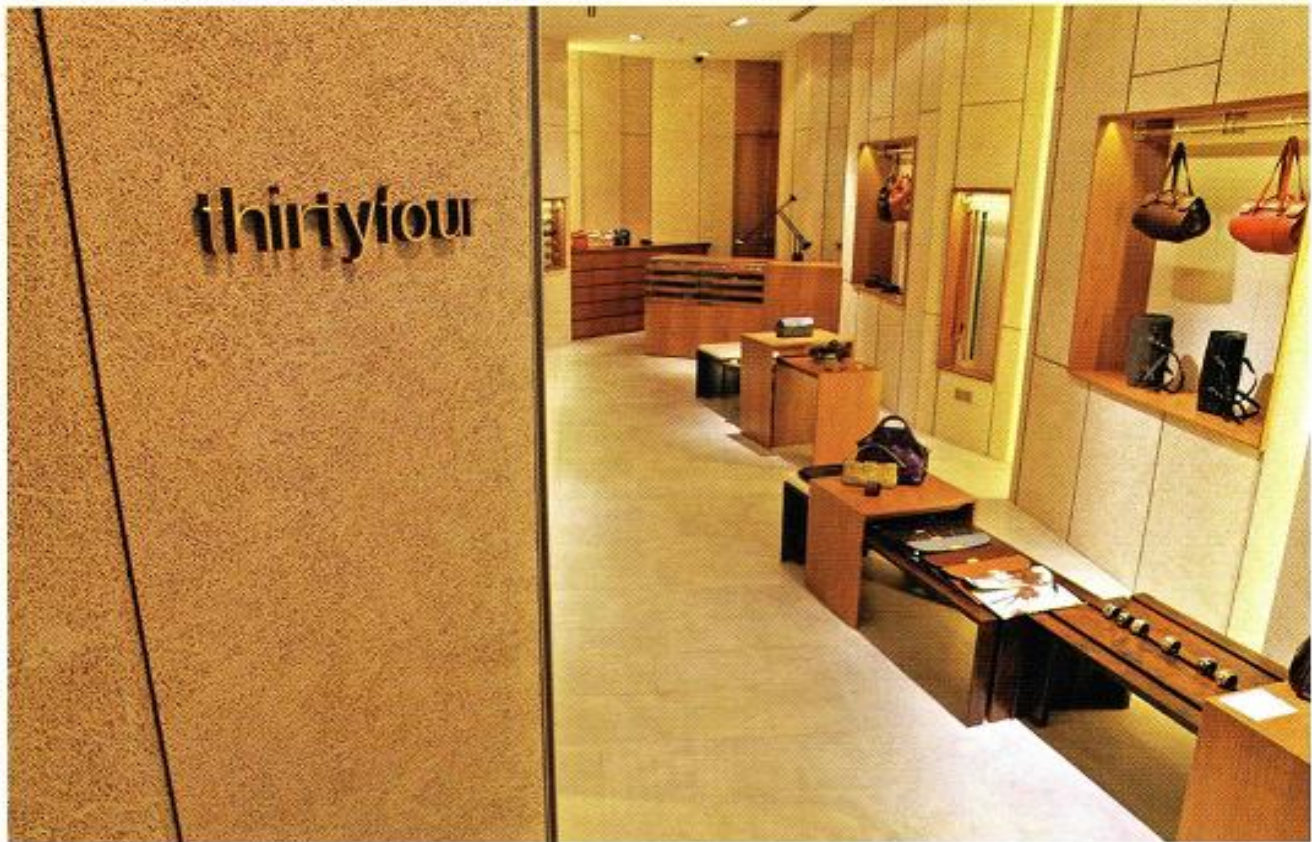
- Theatres, Studios, Concert Halls, Broadcasting Systems
- Schools, Auditoriums, Language Laboratories, Training Centers
- Mosques, Churches, Kindergardens
- Hospitals, Hotels, Convention Centers, Banquet Halls
- Offices, Lobbies, Meeting Rooms
- Audio & Visual Rooms, Living Rooms
- Factories Stores Control Rooms
- Health Clubs, Gymnasiums





ECOLOGICAL & HEALTH ASPECTS

- ✧ Panels are made of natural materials
- ✧ Ideal choice for buildings : comfortable for people sensitive to allergies
- ✧ Recommended for healthy living environments
- ✧ No harmful gases or vapours given off
- ✧ No toxic fumes if burned
- ✧ Diffusion permeable
- ✧ No waste disposal problem
- ✧ Naturally resistant to fungus and insects
- ✧ Free of Formaldehyde
- ✧ Excellent Noise Barrier

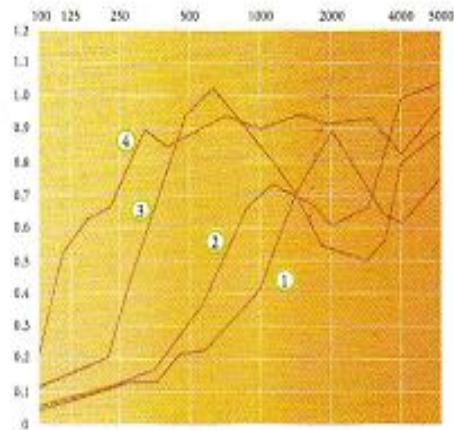


TECHNICAL ADVANTAGES

- ★ Very Durable
- ★ Excellent Sound Absorption up to NRC 1.00
- ★ Non flammable and self extinguishing
- ★ Thermally Insulating
- ★ Compatible with all normal construction materials
- ★ High Compression resistance and flexural strength
- ★ Dimensionally stable
- ★ Vapour permeable
- ★ Easy and safe to handle, cut and work.
- ★ Proven performance in over 80 years in all climates

Noise Reduction Co-Efficiency

Durakustik 25mm



①	0.88	0.38	0.75
②	0.10	0.54	0.65
③	0.27	0.85	0.65
④	0.61	0.90	0.51

① Gap to ceiling 0 mm



② Gap to ceiling 30 mm / Back-filling 0mm



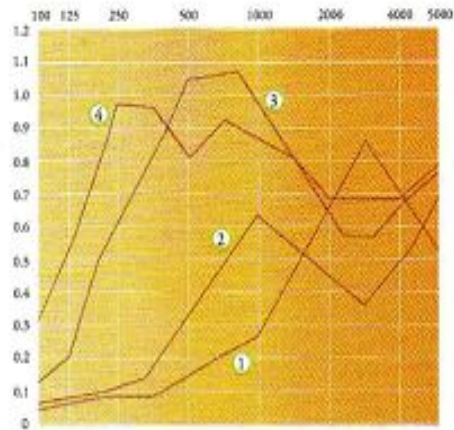
③ Gap to ceiling 25 mm / Back-filling 25 mm



④ Gap to ceiling 250 mm / Back-filling 45 mm



Durakustik 15mm



①	0.66	0.22	0.66
②	0.88	0.45	0.51
③	0.35	0.55	0.64
④	0.69	0.85	0.71

① Gap to ceiling 0 mm



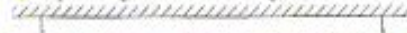
② Gap to ceiling 30 mm / Back-filling 0mm



③ Gap to ceiling 25 mm / Back-filling 25 mm



④ Gap to ceiling 250 mm / Back-filling 45 mm



“SECRET INGREDIENTS”

Rock, River & Tree Naturally

OPC (Ordinary Portland Cement) | H₂O (Water) | TIMBER



For more information on related products,
kindly refer to www.heraklith.com